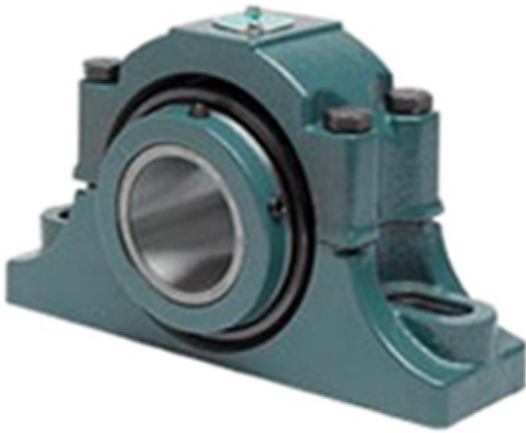




Bearing de Mexico, S.A.



2.75 Inch | 69.85 Millimeter x 4.5 Inch | 114.3 Millimeter x 3.125 Inch | 79.38 Millimeter DODGE P2B-EXL-212R Pillow Block Bearings

Bearing No. P2B-EXL-212R

P2B-EXL-212R Bearing 2D drawings and 3D CAD models

Category	Pillow Block Bearings
Inventory	0.0
Manufacturer Name	ABB MOTORS AND MECHANICAL INC
Minimum Buy Quantity	N/A
Weight	19.068
EAN	0782476587437
Product Group	M06288
Number of Mounting Holes	2
Mounting Method	Concentric Collar
Housing Style	2 Bolt Pillow Block
Rolling Element	Tapered Roller Bearing
Housing Material	Cast Iron
Expansion / Non-expansion	Non-expansion
Mounting Bolts	3/4 Inch
Relubricatable	Yes
Insert Part Number	S1U-EXL-212R
Seals	Triple Lip Contact
Housing Configuration	2 Piece Split
Inch - Metric	Inch
Other Features	Double Row Double Collar With Set Screw
Long Description	2 Bolt Pillow Block; 2-3/4" Bore; 3-1/8" Base to Center Height; Concentric Collar Mount; Tapered Roller



Bearing de Mexico, S.A.

	Bearing; 8.06" Minimum Bolt Spacing; 10" Bolt Spacing Maximum; Relubricatabl
Category	Pillow Block
UNSPSC	31171511
Harmonized Tariff Code	8483.20.40.80
Noun	Bearing
Keyword String	Pillow Block
Manufacturer URL	http://www.dodge-pt.com
Manufacturer Item Number	P2B-EXL-212R
Manufacturer Internal Number	077237
Weight / LBS	42
Bolt Spacing Minimum	8.06 Inch 204.724Millimeter
Bolt Spacing Maximum	10 Inch 254Millimeter
Nominal Bolt Center to Center	8.8 Inch 223 Millimeter
Actual Bolt Center to Center	0 Inch 0Millimeter
d	2.75 Inch 69.85 Millimeter
B	3.125 Inch 79.38 Millimeter
D	4.5 Inch 114.3 Millimeter